

# Technical Specifications

Bunjil Place – Studio

Updated: May 2023



Patrick Northeast Drive  
Narre Warren, VIC, 3805

P: +61 3 9709 9450  
E: [bunjilplace@casey.vic.gov.au](mailto:bunjilplace@casey.vic.gov.au)  
W: [bunjilplace.com.au](http://bunjilplace.com.au)

## Table of Contents

Table of Contents.....	2
Stage .....	4
Stage Dimensions.....	4
Floor Loading.....	4
Auditorium .....	4
Accessibility.....	5
Drapery .....	5
Harlequin Floor .....	5
Access Equipment.....	6
Portable Staging.....	6
Additional Staging Gear .....	7
Loading Dock.....	8
Lighting.....	9
Positions.....	9
Control .....	10
Dimmer Racks .....	10
House Lights.....	10
Stage Luminaire .....	11
Cabling.....	12
Audio.....	13
Control Positions.....	13
Control & Amplification .....	13
Speakers.....	13
Playback .....	13
Microphones.....	14
Wireless Microphones & System .....	14
Accessories.....	15
Cabling.....	15
Audio Notes .....	15
Audio Visual .....	16
Projection Room .....	16
Projector .....	16
Screen .....	16
AV Playback Equipment.....	16

Projector Rigging Points.....	16
Cabling.....	16
Backstage .....	17
Communications .....	17
Dressing Rooms.....	17
Green Room .....	17
Stage Door.....	17
Additional Facilities & Information .....	18
Orchestral.....	18
Additional Included Stage Furniture .....	18
Venue .....	19
Contacts .....	19
Venue Plans.....	19
Venue Information.....	19
Appendix A – Standard LX Plan .....	20



## Stage

The Studio is designed as a black box venue, approximately 16.6m (l) x 13.8m (w) x 6.2m (h – to grid). It has a hardwood floor covered with Weathertex sheets. It is equipped with a versatile selection of production equipment suitable for a wide range of performances, functions and event modes. It is located directly off the main foyer at ground level, with its own backstage facilities.

## Stage Dimensions

### Setting Line

8700mm from back wall.

1788mm from front of seating bank when extended

200mm DS from floor seam

### Distance From (SL = Setting Line, CL = Centre Line)

SL to rear wall	8700mm
CL to OP wall (or obstruction)	8393mm
CL to OP Curtain	6945mm
CL to PS wall (or obstruction)	8391mm
CL to PS Curtain	6975mm
Stage to underside of catwalk	6290mm to sprinkler head 5938mm to speakers
CL to OP Catwalk handrail	6879mm
CL to PS Catwalk Handrail	6878mm

### Overhead obstructions

Sprinkler heads, catwalks PS & OP, Aircon duct over seating bank.

## Floor Loading

Distributed load limit 750kg/m<sup>2</sup> (7.5 kPa)

Point load limit 450kg (4.5 kN)

## Auditorium

The standard theatre venue configuration is a retractable seating system with 201 chairs. When retracted, the venue offers a flexible seating configuration to suit individual events. Standard setups include theatre style performance/conference, seated dining, cabaret and cocktail function. Please contact the Coordinator Production to discuss venue arrangements.

## Accessibility

The auditorium is accessible by wheelchair from the Ground Floor Foyer.

## Drapery

Type	Material	Colour	Width	Height	Quantity
Under Balcony Curtains	Wool	Black	3000mm	3230mm	12
Cyclorama	Cloth	White	13500mm	6500mm	1
Borders	Wool	Black	14000mm	2000mm	1
Legs	Wool	Black	3000mm	7300mm	8

## Harlequin Floor

Bunjil Place has Ivy Insignia Soft Shoe Floor and Harlequin Reversible Pro available for hire, this is a shared venue resource between the Theatre and Studio, if you wish to use it you must organize this during your initial booking.

### Ivy Insignia Soft Shoe Floor Information:

Area	Recommended Height
Roll width	1.5m
Roll length	15m
Number or rolls	7
Colours	Dark
Thickness	4mm
Weight	3.2kg/m <sup>2</sup>
Fire Rating	critical radiant flux 4.8 kW/m <sup>2</sup> Smoke 199%.min (PASS)
Product Construction	Homogeneous vinyl flooring with foam interlayer

### Harlequin Reversible Pro Information:

Area	Recommended Height
Roll width	2m
Roll length	13m
Number or rolls	4
Colours	Light / Dark
Thickness	1.5mm
Weight	2.25kg/m <sup>2</sup>
Fire Rating	Bfl-s1 (EN13501-1)

## Access Equipment

Shared Venue resource with Studio.

Haulotte Compact :	10N
Work Height:	10m
Platform Height:	8m
Lift Capacity:	230kg

Haulotte Quickup:	11
Work Height:	10.8m
Platform Height:	8.8m
Lift Capacity:	159kg

Outriggers **must** be setup to operate lift. Total floor space 1550mm x 1750mm.

Operators must be inducted by Bunjil Place Staff before using the Elevated Work Platform.

### EWP Restrictions

Outriggers must be used at all times on Quickup 11.

Compact 10N cannot be used on DSC traps area of stage.

### Ladders

'A' 3 Step Fibreglass 0.9m x 1

'A' 6 Step Fibreglass 1.8m x 2

'A' 8 Step Fibreglass 2.4m x 2

## Portable Staging

Bunjil Place has a range of Megadeck with painted black plywood tops, there are legs and skirts to fit 200mm, 400mm & 600mm.

Standard Studio Hire includes 4x Megadeck sections, extra sections of Megadeck will incur additional charges.

All portable staging is a shared resource between the Studio and Theatre and must be booked 1 month prior to the commencement of your hire.

### Stage Pieces

Megadeck 1200 x 2400mm	Qty 14
Megadeck Rollaway 1200 x 2400	Qty 2
Megadeck 1200 x 1200mm	Qty 4
Wheelchair Accessible ramp (400mm)	Qty 1

## Additional Staging Gear

18x	500mm Boom Arm
6x	2500mm High 300mm Box Truss with base plates
4x	3000mm High 300mm Box Truss with base plates
6x	3000mm High 300mm TriTruss
6x	Universal Base Plates

All Staging Gear is a shared resource between the Studio and Theatre and must be booked 1 month prior to the commencement of your hire. Additional costs may apply.

All truss can be joined together for use as horizontal flown truss.

We have a range of rigging equipment/gear available for use. Please speak to your event coordinator for more information.



## Loading Dock

### Access

Delivery access for goods vehicles off Magid Drive. All deliveries for Studio load at the North Dock. Contact venue for detailed delivery instructions. All access to the dock for drop off and pick up times must be scheduled prior to venue arrival to ensure clear access is available. All vehicles must leave site once unloaded.

### Loading Dock Roller Door Heights:

Area	Lowest Point	Highest Point	Recommended Height
North Dock	4238	4314	4200
South Dock	4527	4620	4500
Vehicles undertaking complete entrance and exit via both docks			4200

### Theatre Dock Truck Arrival Access Diagram:





## Lighting

Lighting configuration as per house plan (see appendix A), includes: Front Wash, 12 specials, Top and Side Colour Led Wash and Gobo wash. Additional Lighting provided by the venue not on the house plan will incur additional charges. Any changes to the venues standard Lighting Configuration must be approved by the Coordinator Production a minimum of 1 month prior to the commencement of your hire.

Please refer to appendix-A for House Lighting Plan

## Positions

### Stage LX Bars

Fixed positions; +7150mm AFF

### Lighting Bridge #1 – Above Seating

<b>LX1</b>	13800mm from rear wall
SL to lighting bar	5125mm DS (horizontal)
Usable bar width	13500mm
<b>LX2</b>	12000mm from rear wall
SL to lighting bar	3417mm DS (horizontal)
Usable bar width	13500mm

### Lighting Bridge #2

<b>LX3</b>	9700mm from rear wall
SL to lighting bar	1020mm DS (horizontal)
Usable bar width	13500mm
<b>LX4</b>	8000mm from rear wall
SL to lighting bar	690mm US (horizontal)
Usable bar width	13500mm

### Lighting Bridge #3– Above Stage

<b>LX5</b>	5600mm from rear wall
SL to lighting bar	3080mm US (horizontal)
Usable bar width	13500mm
<b>LX6</b>	3850mm from rear wall
SL to lighting bar	4800mm US (horizontal)
Usable bar width	13500mm

### Lighting Bridge #4

<b>LX7</b>	1500mm from rear wall
SL to lighting bar	7160mm US (horizontal)
Usable bar width	13500mm

## Control

### Lighting desk:

GrandMA2 Ultra-lite (Model # 120113) – Software version 3.9.60.2 as of October 2020

### Accessories:

GrandMA2 Fader Wind (Qty 1)  
21.5" Touchscreen monitor (Qty 2)

### Control channels:

4096 Outputs/Parameters

### Signal output:

Art-Net / DMX / MA Net (Art-Net network on dedicated switch located in control room.)

### Signal distribution:

1x 5 Port Nexus Ethernet/DMX Converters  
1x 5 way DMX splitters from control room to the following possible locations:

- 10 On stage
- 8 Balcony
- 12 Level 1 Catwalks

### Remote riggers available onstage?

No

## Dimmer Racks

**Total Dimmers** 120 (hot power, dimmer and relay)

**Dimmer Locations** The Dimmer Room is located on Level 1, OP side - access control cards are needed

## House Lights

### Independent control

Through Touch panel only, no desk control.

### Fade time adjustable

House light fade time not adjustable.



## Stage Luminaire

### Profiles:

Make	Model	Angle	Detail / Accessories	Watt	Total
ETC	Source 4	36°	10 Gobo Holders to suit 'B' size, 8 Iris' (All accessories are a shared resource between the Theatre and Studio and must be booked prior to the commencement of your hire.)	750w	26
ETC	Source 4	25°-50°		750w	12

### Fresnel's:

Make	Model	Details / Accessories	Watt	Total
Selecon	Acclaim Fresnel	Barndoors	650w	8
ETC	Source 4 Fresnel	Banndoors	750w	15

### LED's:

Make	Model	Angle	Details / Accessories	Watt	Total
EK	eProfile VW	36°		250w	22
EK	eProfile VW	50°		250w	8
ETC	ColorSource LED Par	Primary field: 24.9° Beam: 14.5°		90w	8

### Additional Lighting Equipment\* (shared venue resources)

Item	Make	Model	Detail / Accessories	Watt	Total
Hazer	Swefog	Duramax Intellahazer 1K8			1
Hazer	Look Solutions	Unique 2.1			1
Smoke Machine	Martin Jem	ZR45			1
Fan	DJ Power	H-9 Pro DMX Fan	Remote control		1
Mirror Ball	Bright Light	600mm/24"	Motor		1
Birdies (Par 16)			MFL	50w	10
Sconces	Rat Stands	Star Light	Clip on Rechargeable		40
Profile	ETC	Source 4	14°	750w	2
Profile	ETC	Source 4	19°	750w	3
Profile	ETC	Source 4	15° - 30°	750w	1
Profile	ETC	Source 4	50°	750w	4
LED	ETC	ColorSource LED Par	Primary field: 24.9° Beam: 14.5°	90w	8
Fresnel	ETC	Source 4 Fresnel	9° - 52°	750w	4

### Note:

\* Charges apply, for more information please contact the Team Leader: Production for a copy of our schedule of fees.

## Cabling

### **240v Extension Cable:**

The theatre has a stock of extension leads to accommodate the venue's standard lighting rig. Any additional equipment may require additional cable stock to be sourced.

### **Looms & 3 phase Extensions:** (shared venue resources)

- 1 x 10m 3 Phase 40A
- 2 x 3m 3 Phase 40A
- 1 x LSC APS Distro

### **DMX Cable:**

The theatre has a stock of DMX cable to accommodate the venue's standard lighting rig. Any additional equipment may require additional cable stock to be sourced.



## Audio

Standard hire includes: FoH speaker system, 2 x cabled microphones, and 4 x wireless Channels (receivers only). Any changes to the standard house configuration must be approved by the Coordinator Production a minimum of 1 month prior to the commencement of your hire, and may incur additional charges. Contact Coordinator Production for a copy of our schedule of fees.

## Control Positions

### Control Room

Audio operation from Control Room above seating at rear of room.

### Auditorium

No set position. Auditorium operation may be available pending venue setup.

## Control & Amplification

### Primary Mixer

Yamaha QL1 mixing console with Rio3224-D provides 32 inputs, 16 outputs and 4 AES/EBU outputs.

## Speakers

### FOH Speakers

2 x EAW KF394 loudspeakers  
 2 x EAW SB1002 subwoofers  
 1 x EAW UX3600 sound processor.

### Amplifiers

1 x Powersoft X4 amplifier  
 Foldback/Multi-Use  
 4 x QSC K10 Speakers

Additional speakers may be available, please contact Team Leader: Production for more information.

## Playback

Shared venue resource

Item	Make	Model	Details	Total
CD Player	Tascam	CD-200SB	Single playback with USB & SD playback of .wav and .mp3 files.	1

## Microphones

Bunjil Place has a good stock of microphones and stands which are shared between the Theatre and Studio spaces. Please contact the Team Leader: Production for availability.

Standard hire inclusions include 2 cabled microphones and playback facility.

Make	Model	Details / Accessories	Use	Total
Shure	MX412/C		Lectern	1
Shure	MX418/C		Lectern	1
Shure	Beta 52	Mic clip	Kick	1
Shure	Beta 58	Mic clip	Vocal	4
Shure	SM58	Mic clip	Vocal	4
Shure	SM57	Mic clip	Instrument	8
Sennheiser	E835-S	Mic clip, switch	Vocal	4
Sennheiser	E906	Mic clip	Guitar	1
Sennheiser	E901		Plate	4
Sennheiser	E604	Mic clip	Tom	4
AKG	C214	Mic clip	Large Diaphragm	2
AKG	C451	Mic clip	Pencil Condenser	2
Audio Technica	ATM350		Instrument	4
DPA	2011	Twin diaphragm	Instrument/Choir	4
RODE	M5	Mic Clip	Instrument/Choir	6

## Wireless Microphones & System

Make	Model	Detail / Accessories	Use	Total
Shure	ULXD2-SM86	Handheld Microphone	Voice	6
Shure	ULXD2-KSM8	Handheld Microphone	Voice	4
Shure	WL185	Cardioid Lapel Microphone	Voice	4
Countryman	E6IOW5T2SL	Headset Microphone	Voice	6
Shure	ULXD1	Belt pack	Transmitter	14
JAG	IMX6A	Headset Microphone	Voice	9
DPA	4066	Headset Microphone	Voice	4
Generic	N/A	Headset Microphone	Voice	12

All wireless microphones are used with a Shure ULXD Wireless system.

The system is capable of up to 8 channels.

## Accessories

Make	Model	Total
BSS Audio	AR-133	8
K&M	Extra Tall Boom stand (heavy base)	2
K&M	Tall Straight Boom stand	10
K&M	Tall Telescopic Boom stand	14
K&M	Small Telescopic Boom stand	7
K&M	Tall Straight Round Base Stand	4
K&M	Extra Short Table Stand	12
K&M	Speaker Stand – Push Up	2
K&M	Speaker Stand – Winch Up	4

## Cabling

### Audio Cable

The Studio has a stock of cable to accommodate the venue's equipment.

#### Multicore (shared venue resources)

- 2 x 15m 12 x XLR stagebox
- 2 x 10m 8 x XLR stagebox
- 1 x 10m 8/4 XLR with stagebox
- 3 x 10m 4 x XLR return
- 1 x 10m 4 x XLR send
- 1 x 24 XLR Multipin loom return
- 1 x 24 Variable XLR Multipin with stagebox

## Audio Notes

Separate power outlets for use by audio only throughout venue.

FOH Speakers are rigged on static pickups. Fixed positions.

Mixing location is in control booth, but can be controlled via iPad. Live mixing can be operated from PS or OP balcony, or from the rear of the seating bank pending venue setup, if needed.

## Audio Visual

### Projection Room

The Projector is located in the control room at the rear of the seating. The projector cannot be moved or flown.

### Projector

Type	Model	Detail / Accessories
Panasonic	DZ780E	8,500 Lumens

### Screen

#### Projection Screen:

Motorised front projection screen rigged permanently US wall.

Screen dimensions:

250" 16:9 – 5535mm (w) x 3113mm (h)

### AV Playback Equipment

Share resource venue resources

Item	Model	Detail / Accessories
Newhank Blue-Ray	BDP-432RSV2	Rackmount Blu-ray Player

### Projector Rigging Points

The projector is rigged in a fixed position in the auditorium and cannot be moved.

### Cabling

The studio has a stock of cable and adapters to accommodate the venue equipment. Additional equipment will need additional cabling to be sourced.



## Backstage

### Communications

#### Stage Managers Desk

The Stage Managers desk is portable and can be moved around as required. The desk is fitted with a light, Crestron touch panel, 15" 16:9 display, audio monitor, comms and cue light system.

#### Talkback

Master Unit

Riedel CC8 running 2 loops.

Cross talk is available on A loop, belt pack only on B loop.

Total sub stations            2 x Riedel RSP2318 smartpanel  
    6 x Belt packs

Total headsets                13 Lightweight Headset

Radio Units In-house:        4 x Wireless Belt packs

Talkback patching is located around the venue in various locations including; Stage Managers Desk, Stage – PS (US & DS), CS (US), OP (US & DS), Control Room, Seating Gallery, Backstage, Rack Room, & Dimmer Room

#### Paging / Show relay

Paging to backstage is available from the stage managers desk. Show relay is distributed to backstage.

#### Stage Monitor

TV's set up in Green Room, Dressing Rooms and SM position.

#### Cue-Light System

In House Cue Light SystemQLM-16 in Stage Managers Desk

Number of units                Master  
    3 x Single

## Dressing Rooms

The Studio has its own backstage space equipped with 3 wall mounted dressing tables (with mirror and light) as well as 1 Medium sized dressing room and shared Green Room facilities. Please contact Coordinator Production regarding availability.

### Green Room

Tea / Coffee facilities	Yes
Fridge / freezer	Yes
Microwave	Yes
Running water	Yes

## Stage Door

### Access

Stage Door is located beside the north loading dock on Magid Drive. Access via the north loading dock. Stage Door will be staffed for all events and bump in/out.

## Additional Facilities & Information

### Orchestral

(shared venue resources)

1 x Steinway D-Model Concert Grand Piano.\*

1 x Yamaha C1X Baby Grand Piano. \*

1 x Yamaha Upright Piano.\*

40 x Rat Stand music stands.

40 x Rat Stand LED Sconces

20 x black stage chairs

1 x Conductors Podium.

\*Additional costs will apply. Relocation and tuning must be arranged prior to use.

### Additional Included Stage Furniture

Lectern is available.

Chairs are available.

Tables are available.



## Venue

### Contacts

Team Leader: Production

Margaret Murray  
mmurray@casey.vic.gov.au  
0418 633 053

Venue Address

2 Patrick Northeast Drive, Narre Warren VIC 3805

Venue Postal Address

PO Box 1000, Narre Warren VIC 3805

### Venue Plans

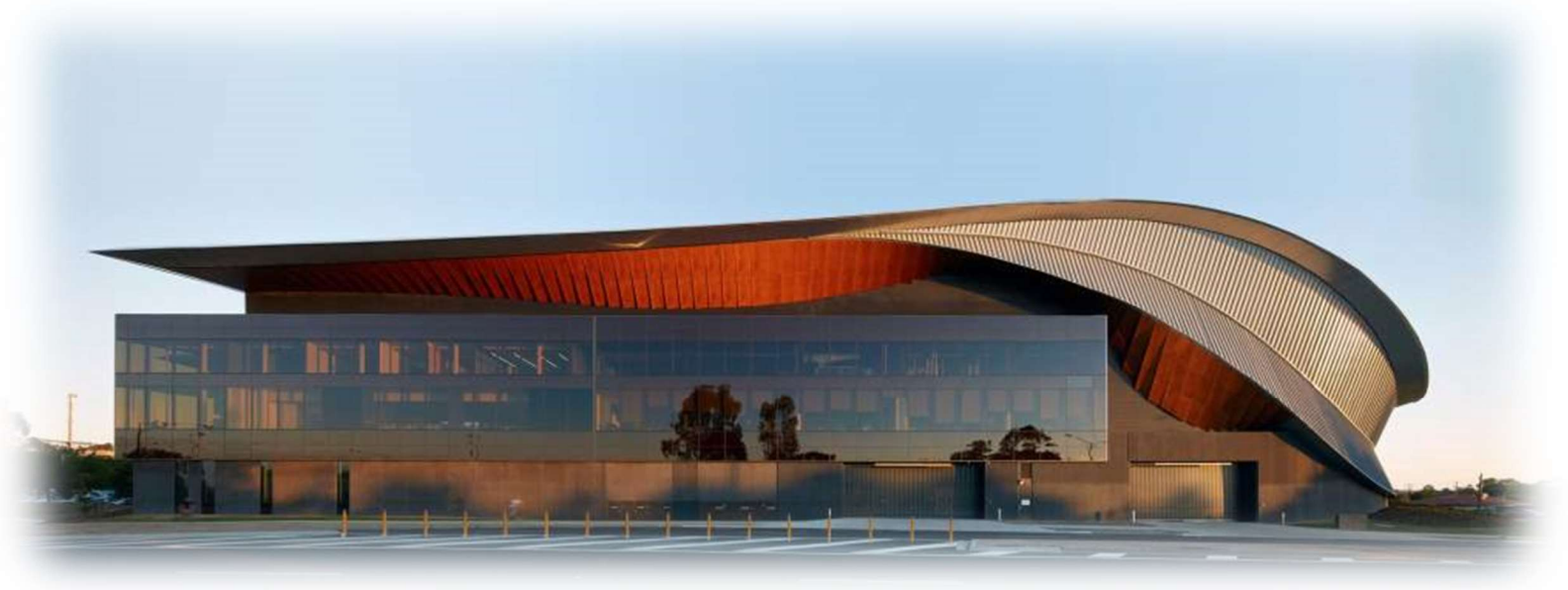
Venue plans are available. Please contact the Team Leader: Production for copies.

### Venue Information

Bunjil Place operates multiple performance spaces. The main venue is a traditional 846 seat proscenium arch theatre. There is also a black box studio space with retractable seating for up to 200 people.

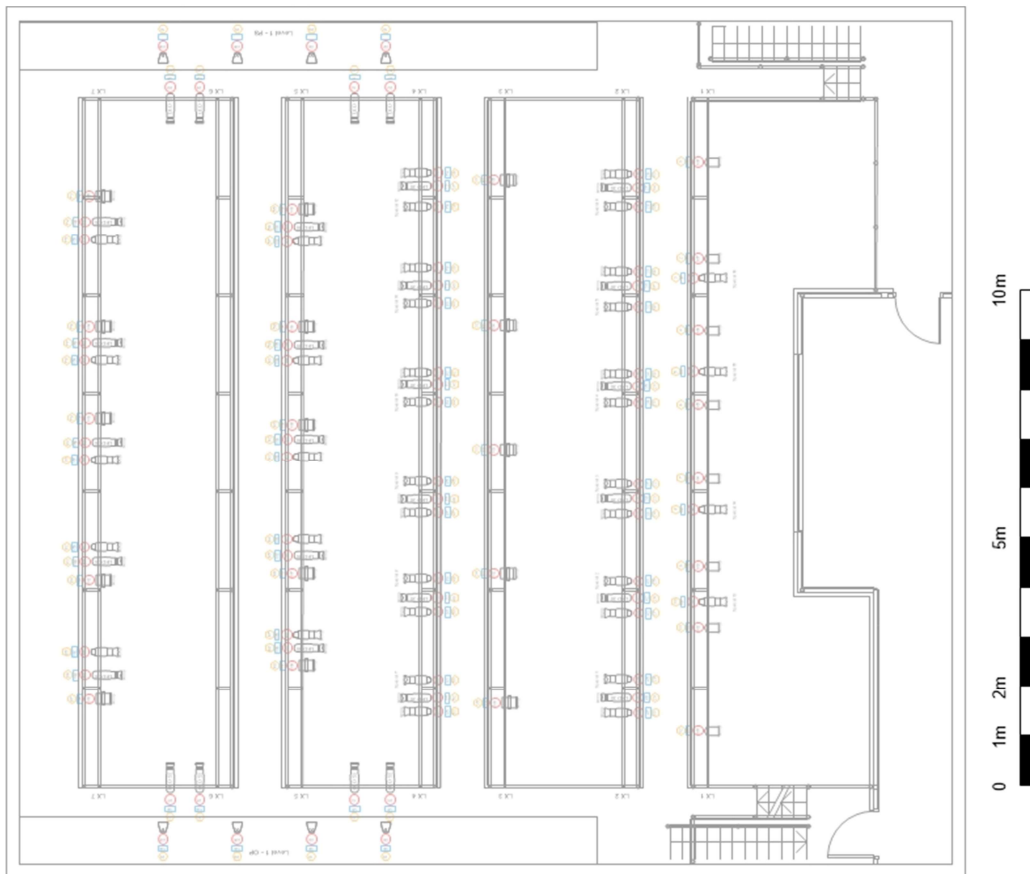
Bunjil Place is owned and operated by council and also houses a Function Centre, Gallery, Community Plaza, Public Library and the council's Civic Centre.

The venue has a café within the complex and is located within walking distance of Westfield Fountain Gate.



## Appendix A – Standard LX Plan

For a digital copy of the Lighting Plan please contact the Team Leader: Production



<b>BUNJIL PLACE</b>	Event	Standard LX 2021
T: +61 (0)3 9709 9450	Drawing Title	Bunjil Place - Studio
E: bunjilplace@casey.vic.gov.au	Event Date	1:75 @ A3
W: bunjilplace.com.au	Drawn By	BP Production - LX Dep
	Drawing Date	13/08/2021